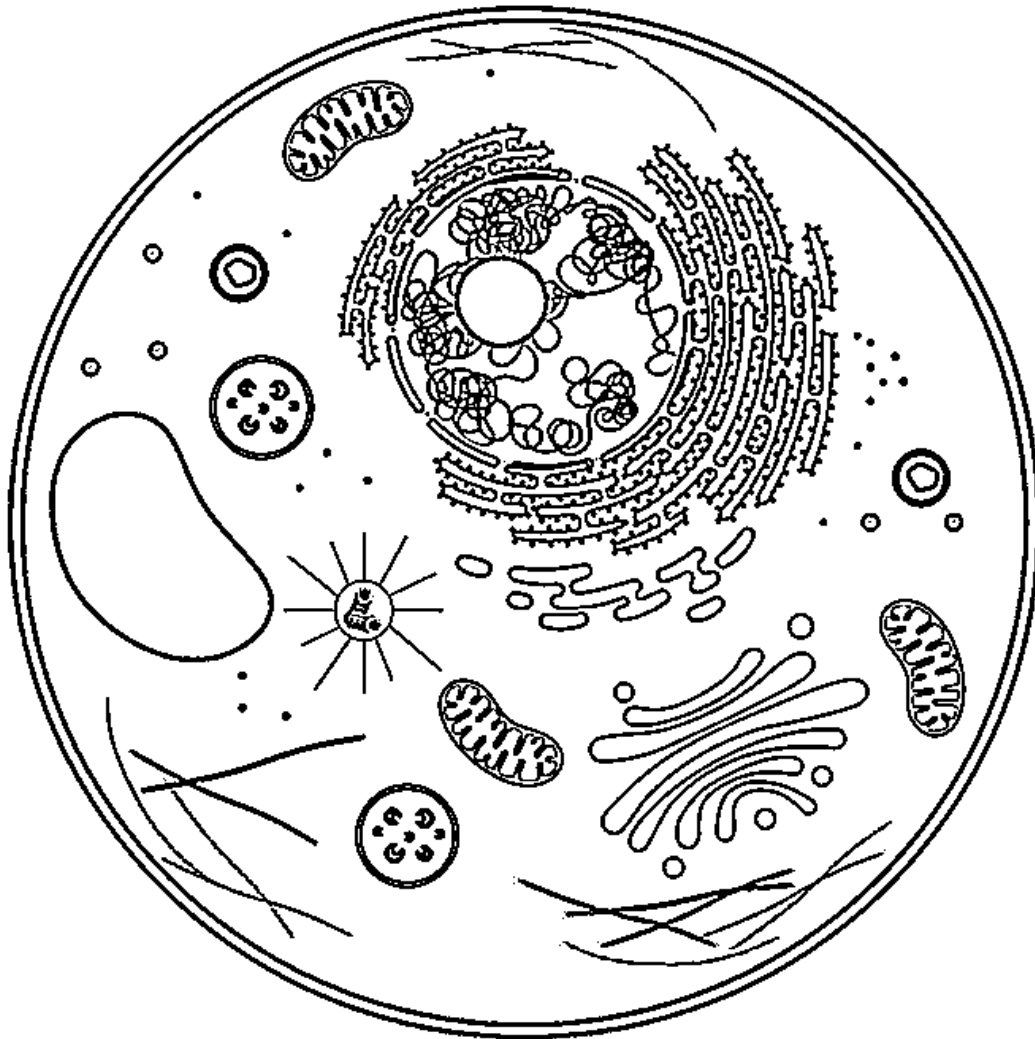


# Microbiology Note

[www.Microbiologynote.com](http://www.Microbiologynote.com)

## Animal Cell Coloring Worksheet



Name \_\_\_\_\_

Cell Membrane (light brown)

Nucleolus (black)

Mitochondria (orange)

Cytoplasm (white)

Golgi Apparatus (pink)

Lysosome (purple)

Nucleoplasm (pink)

Microtubules (green)

Nuclear Membrane (dark brown)

Rough Endoplasmic Reticulum (dark blue)

Chromosomes (dark green)

Ribosome (red)

Smooth Endoplasmic Reticulum (light blue)

Cilia (yellow)

Briefly describe the function of the cell parts.

1. Cell membrane \_\_\_\_\_

2. Endoplasmic Reticulum \_\_\_\_\_

3. Ribosome \_\_\_\_\_

4. Golgi Apparatus \_\_\_\_\_

5. Lysosome \_\_\_\_\_

6. Microtubule \_\_\_\_\_

7. Mitochondria \_\_\_\_\_

8. Nucleus \_\_\_\_\_

Microbiologynote.com